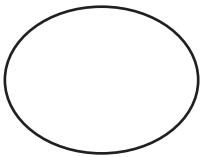
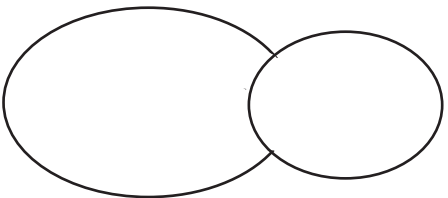


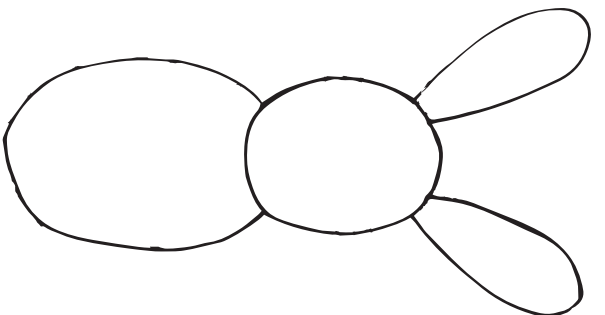
1.



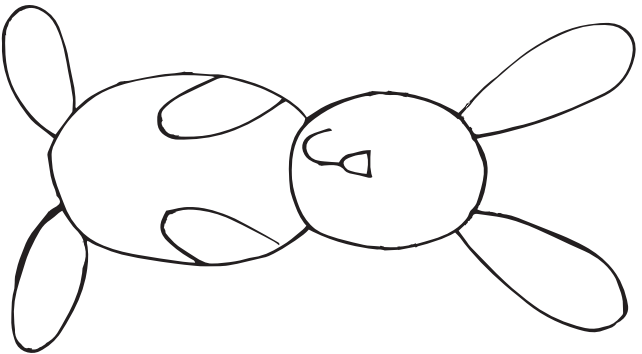
2.



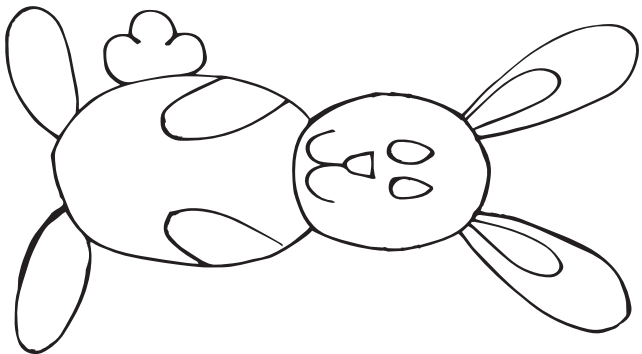
3.



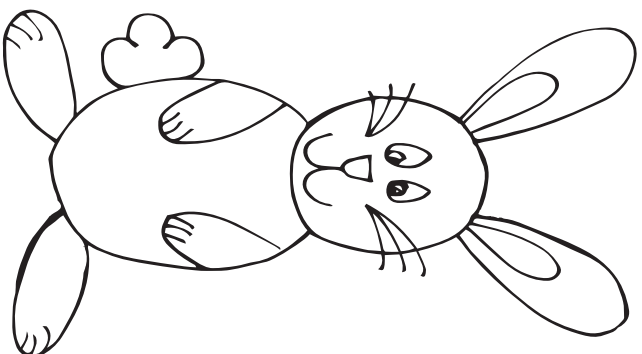
4.

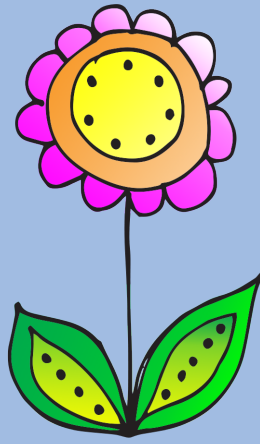


5.



6.





**This resource is for personal/
classroom use only.**

Fonts are by Blue Vinyl &
League of Moveable Type.

Graphics by Karen Whiteside.

We have more spring activities [HERE!](#)

**Happy spring!
Karen & Nicolette**



[blog](#)

[facebook](#)

[google+](#)

[instagram](#)

[pinterest](#)

[TpT](#)

[twitter](#)